

### Fresh water module

#### TransTherm® aqua FT/FTC

Fresh water module for hygienic water heating in the continuous flow principle for single- and two-family homes with:

- high-output, soldered stainless steel plate heat exchanger  
(heat exchanger solder - FT: copper, FTC: stainless steel)
- integrated heating water charging pump
- flow switch for heating water charging pump
- cut-off armatures
- thermostatic hot water temperature control
- stainless steel piping for quick assembly
- wall attachment
- ready-to-connect
- casing made of sheet steel painted in red or white
- base plate

The quick-acting hot water temperature sensor accelerates the closing function of the regulating valve and protects the heat exchanger against overheating and scaling.

Output	65 kW (27 l/min)
	57 kW (23 l/min)



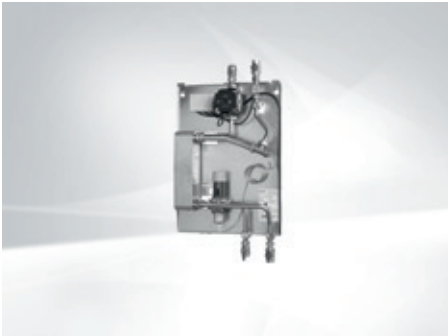
### Circulation module

for TransTherm® aqua FT (65), FTC (57)

- Pre-assembled, for installation on-site, incl. cable and plug
- Recirculation pump with integrated timer and circulation temperature control, as well as with pre-mounted safety valve (option)

Minimum requirements on water quality for fresh water modules see engineering hot water

Fresh water module



**TransTherm® aqua FT/FTC**  
Fresh water module for hygienic water heating with thermostatic control of the hot water temperature by means of quick-acting water temperature controller

Fresh water module TransTherm® aqua	Output kW
FT (65)	65
FTC (57)	57

Part No.

6040 453  
6048 769

Accessories



**Ball valve set DVGW**  
for TransTherm® aqua FT/FTC

6040 456



**Casing**  
for TransTherm® aqua FT/FTC  
White colour

6044 175



**Casing**  
for TransTherm® aqua FT/FTC  
Red colour

6045 319



**Circulation heat exchanger lance R 1"**  
is screwed into the buffer storage tank and integrated into the circulation line.  
Material: Copper, tinned inside  
Transmission power approx. 1 kW at 60 °C  
Hot water temperature in the buffer storage tank without mixing through the storage tank temperature.  
Circulation connections R ½"  
Installation length 660 mm

2038 434

**Circulation module**  
for TransTherm® aqua FT/FTC  
preassembled, for subsequent installation on the fresh water module comprising:  
Circulation pump with timer switch  
Integrated control of the temperature  
Non-return flap, ball valve Rp ¾"  
cable and plug,  
safety valve 10 bar

6040 455

Services



**Commissioning**  
Commissioning by works service or Hoval trained authorised serviceman/company is condition for warranty.

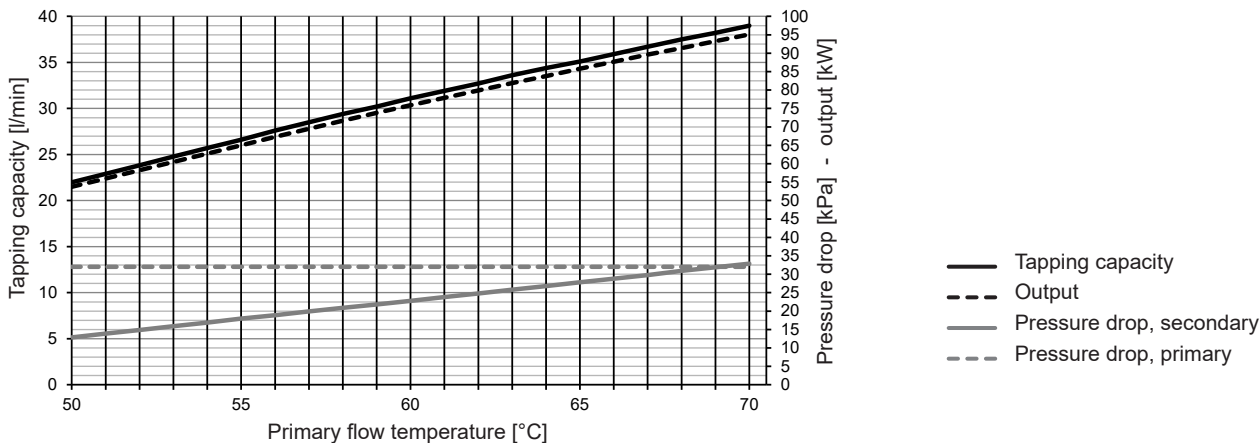
For commissioning and other services please contact your Hoval sales office.

## TransTherm® aqua FT/FTC

Type			FT (65)	FTC (57)
• Output		kW	65	57
• Connection dimension	Heating flow/return	Inches	G ¾" (ext. thread)	
	Cold/hot water	Inches	G ¾" (ext. thread)	
• Dimensions (W x H x D)	Without casing	mm	440 x 655 x 140	
	With casing	mm	450 x 715 x 150	
	With circulation	mm	440/450 x 940 x 140/150	
• Weight (incl. packaging)		kg	20	23
• Controller protection class			IP 54	IP 54
• Supply voltage		V		230
• Plate heat exchanger stainless steel			copper-soldered	soldered stainless steel
<b>Heat exchanger DHW side</b>				
• Operating pressure max.		bar		0.5
• Test pressure		bar		10
• DHW temperature max.		°C		70
<b>Design temperatures DHW side</b>				
• Cold water		°C		10
• Hot water		°C		45
• Continuous output		l/min	27	23
<b>Heat exchanger heating side</b>				
• Operating pressure max.		bar		10
• Max. permissible operating temperature		°C		100
<b>Design temperatures heating side</b>				
• Heating flow		°C		55
• Heating return		°C		20
• Flow resistance (at V = 1.5 m³/h)		kPa		34

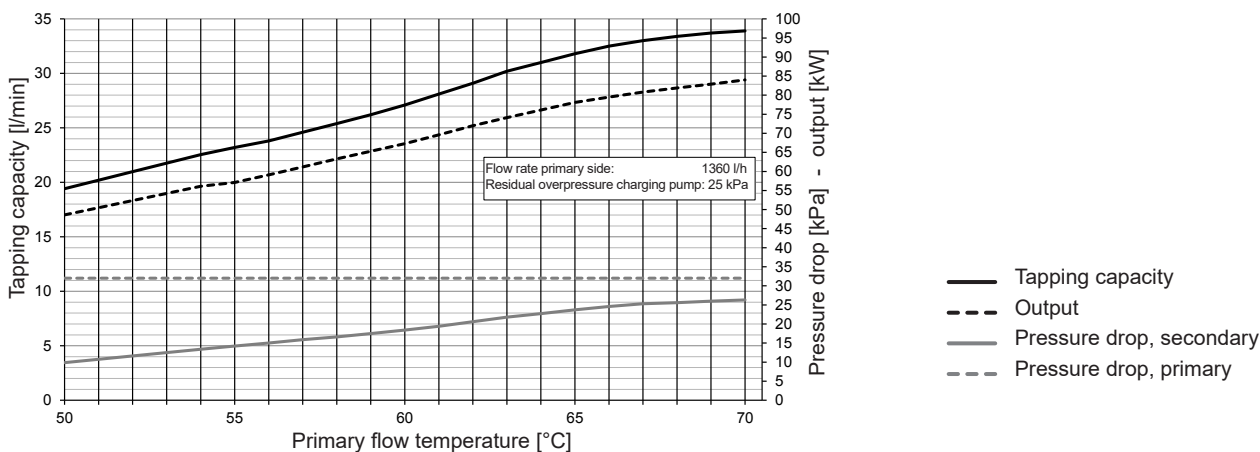
### TransTherm® aqua FT (65)

HW temperature 45 °C: Tapping capacity - Output - Pressure drops

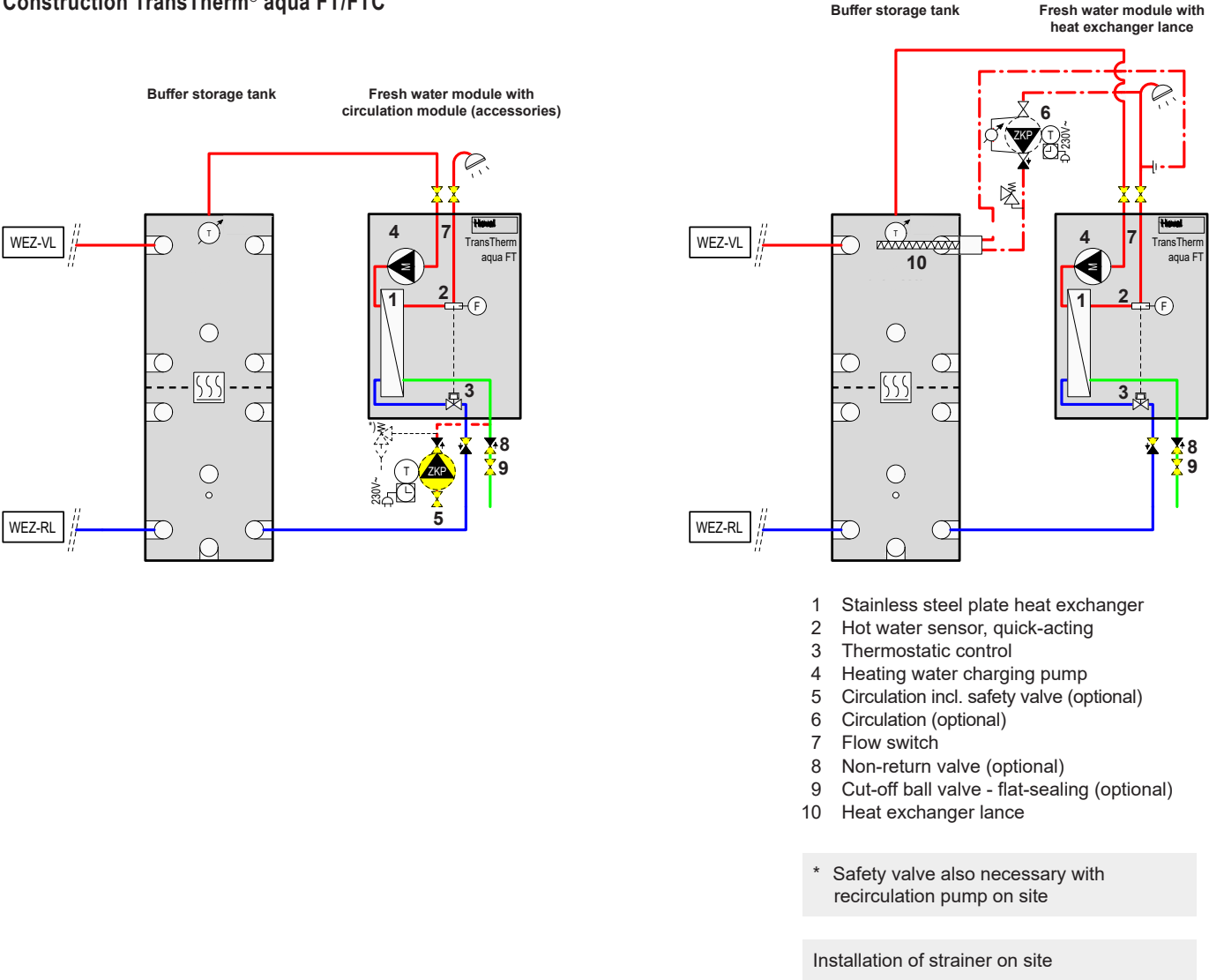


### TransTherm® aqua FTC (57)

HW temperature 45 °C: Tapping capacity - Output - Pressure drops



Construction TransTherm® aqua FT/FTC



Functional description  
Hoval TransTherm® aqua FT/FTC

The Hoval fresh water module TransTherm® aqua FT/FTC, with all piping pre-installed and ready-to-connect, consists of a soldered stainless-steel plate heat exchanger (heat exchanger solder - FT: copper, FTC: stainless steel), an integrated heating water charging pump, a thermostatic controller with tapping detection and hot water temperature control and cut-off devices.

When a hot water tapping point is opened, the heating water charging pump is switched on via the flow detection device and the heating water transported from the buffer storage tank to the heat exchanger.

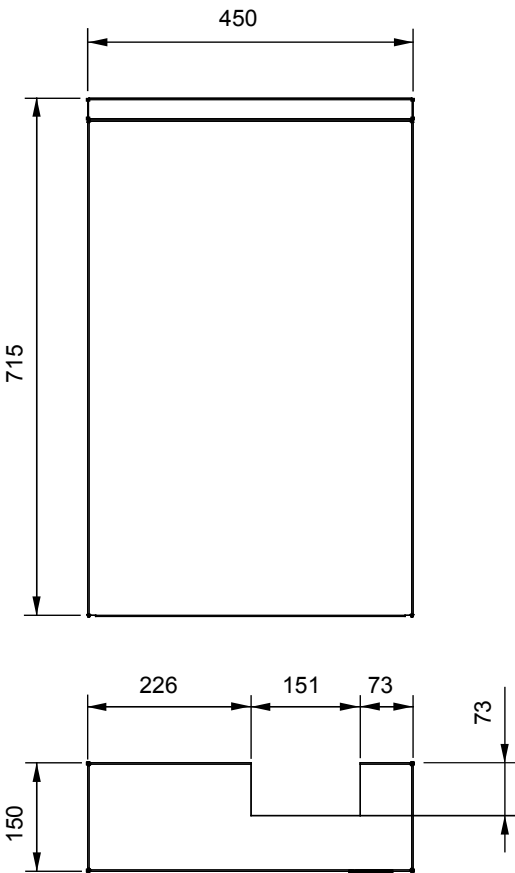
In the large-dimension plate heat exchanger, the hot water is heated in the counterflow principle, directly before removal and in a continuous flow process, from the cold water temperature to the desired DHW temperature.

The quick-acting water temperature controller ensures maintenance of the desired hot water temperature, providing a constant tapping temperature and optimum maintenance of stratification in the buffer storage tank.

An optional recirculation pump with thermostat ensures that the circulating water maintains the desired temperature.

TransTherm® aqua FT/FTC  
(Dimensions in mm)

Casing



Base plate

